



smart  
ctrl

control design for power electronics

# SmartCtrl Installation Guide

January 2020



## SmartCtrl Installation Guide

Version 4.2 – January 2020

### How to Contact:

 [info@powersmartcontrol.com](mailto:info@powersmartcontrol.com)

 [www.powersmartcontrol.com](http://www.powersmartcontrol.com)

## Installing SmartCtrl

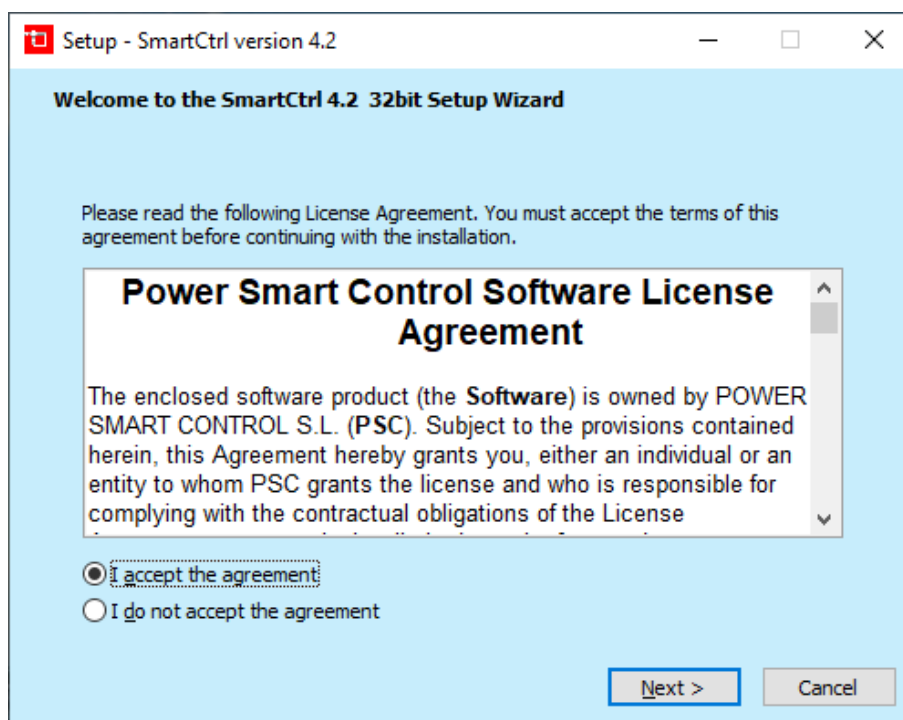
To install SmartCtrl, you must have the system administrative privilege, or ask your system administrator to perform the installation.

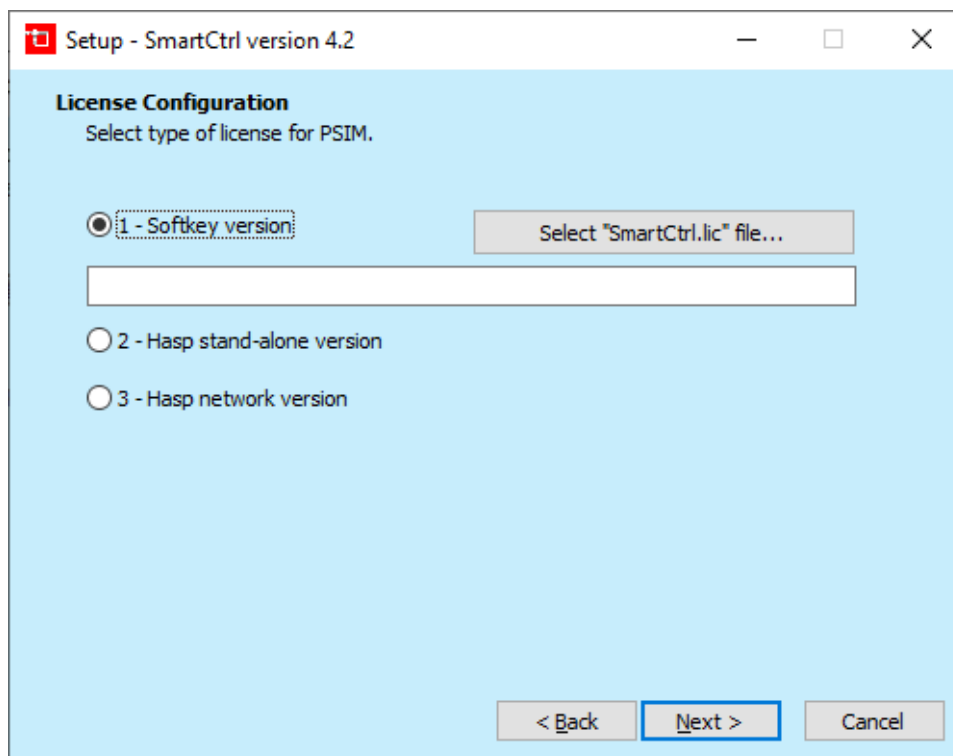
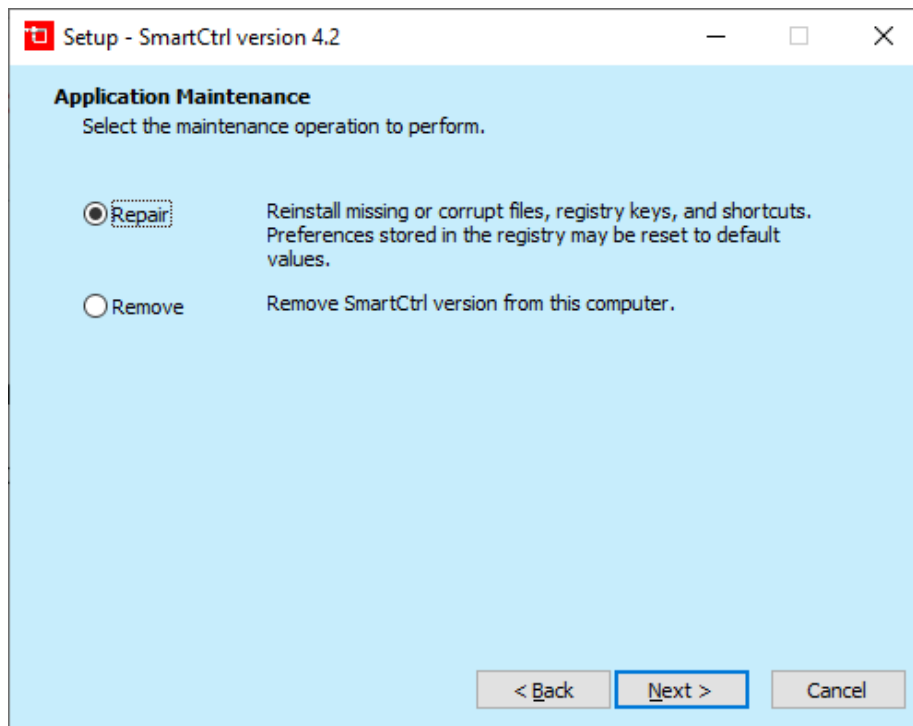
1. If your license is a hasp stand-alone version, connect the hasp key to the computer.  
If the license is a hasp network version, make sure that the hasp network key is connected to the server computer and is set up properly. For more details on how to set up the hasp network key, refer to "PSIM Installation Guide (hasp network.pdf)".

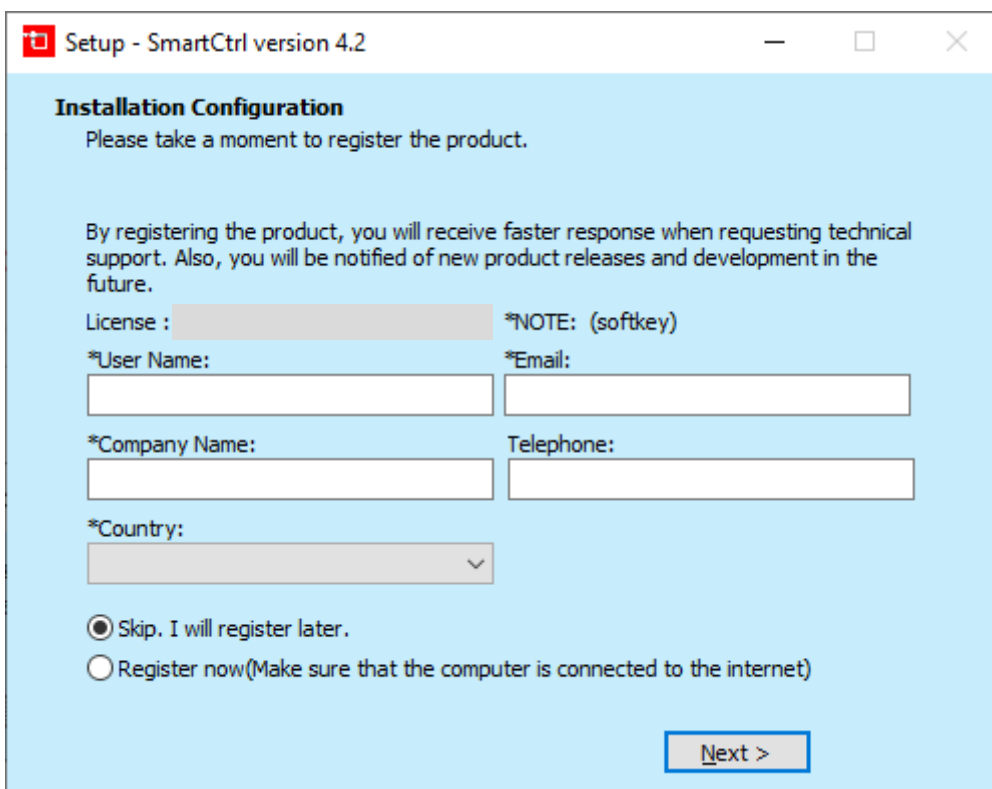
<https://powersimtech.com/installation/>

If the license is a softkey version, make sure that you have the PSIM license file "smartctrl.lic" ready. You can find it within file "SmartCtrl.zip".

2. Run the setup file from either the installation USB key or the download link provided.
3. On the page "Select License Type", choose the correct license version: either Hasp stand-alone version, or Hasp network version, or Softkey version. If Softkey is selected, you will be prompted to browse for the license file "smartctrl.lic". Click on **Next**.
4. Choose the destination folder (the default folder will be under "C:\ SmartCtrl4.2"), and follow the instructions to finish the rest of the installation.







**Setup - SmartCtrl version 4.2**

### Installation Configuration

Please take a moment to register the product.

By registering the product, you will receive faster response when requesting technical support. Also, you will be notified of new product releases and development in the future.

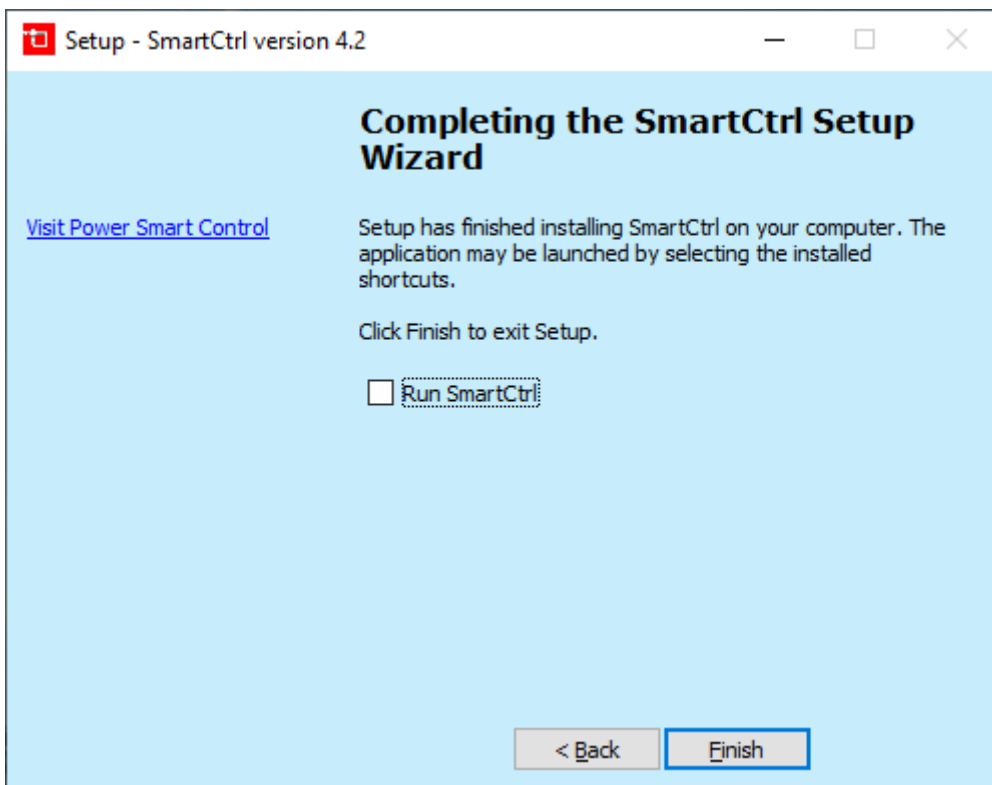
License :  \*NOTE: (softkey)

\*User Name:  \*Email:

\*Company Name:  Telephone:

\*Country:

Skip. I will register later.  
 Register now (Make sure that the computer is connected to the internet)



**Setup - SmartCtrl version 4.2**

### Completing the SmartCtrl Setup Wizard

[Visit Power Smart Control](#)

Setup has finished installing SmartCtrl on your computer. The application may be launched by selecting the installed shortcuts.

Click Finish to exit Setup.

Run SmartCtrl

The SmartCtrl User Manual is available in the “**doc**” folder (or in the Help/Contents menu in SmartCtrl). In the “**examples**” folder under the SmartCtrl installation folder, there are different tutorials with complete sample files.

### **Running SmartCtrl**

SmartCtrl can be launched directly by running “**SmartCtrl.exe**”, or from within **PSIM** by selecting **Utilities >> Launch/Export to SmartCtrl**.

**In case you have any difficulties during the installation process please contact Power Smart Control support:**

[support@powersmartcontrol.com](mailto:support@powersmartcontrol.com)

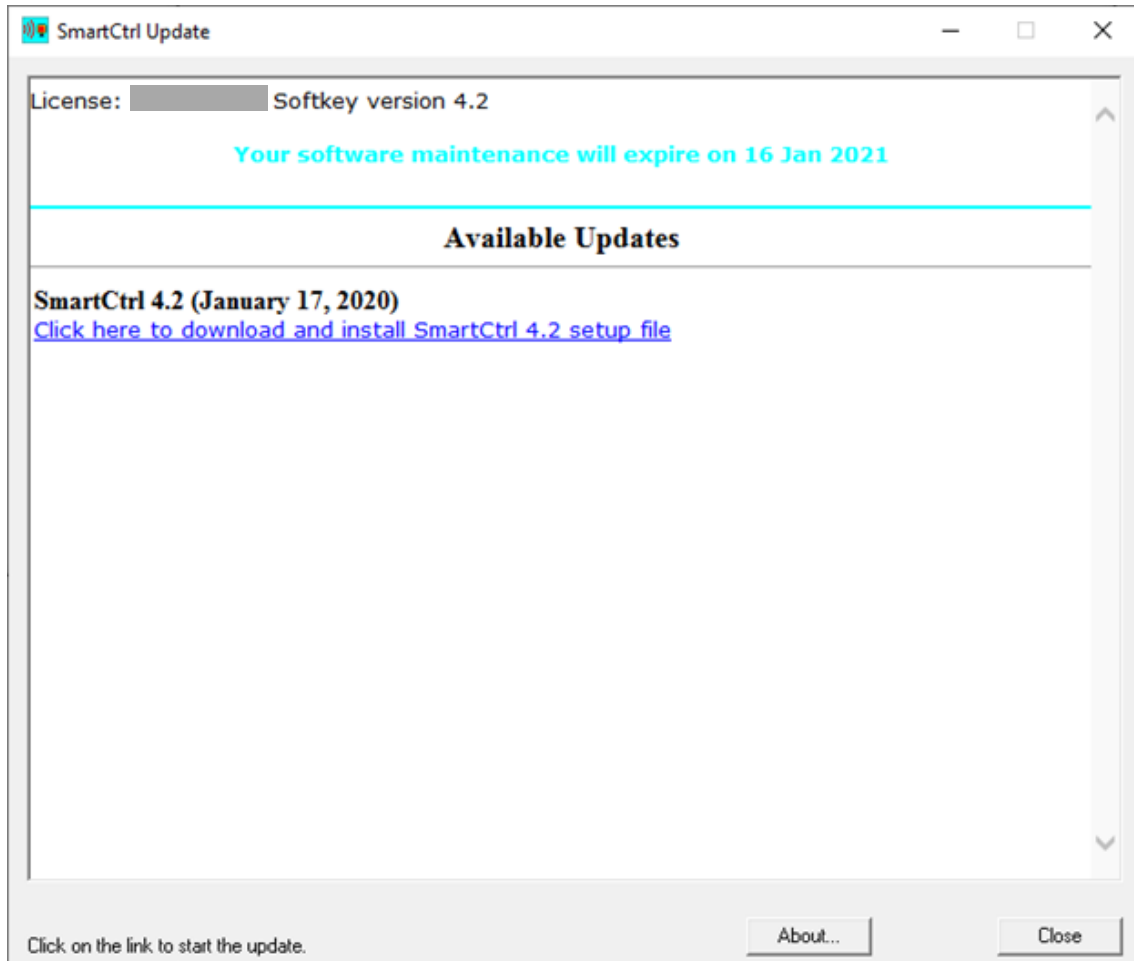
**For software issues or software suggestions please contact:**

[development@powersmartcontrol.com](mailto:development@powersmartcontrol.com)

## Annex

Check for updates functionality

If you already have SmartCtrl 4.1 you can select in **Options>>Check for software updates** and the system will run SmartCtrlUpdate.exe to check if there is a new software version available, in case you have a maintenance contract active.



The message you will get when executing the Check for updates functionality once you have updated the software is shown below:

